

Report Grabber Operator's Manual

Table of Contents

Section 1: Introduction	1
Section 2: Report Grabber Main Page	4
Section 3: Date & Time Stamping	6
Section 4: COM Port Settings.....	8
Section 5: Set Line Labels	10
Section 6: Report Files.....	11

Section 1

Introduction

Introduction

The Report Grabber software has been designed to collect data from up to eight devices configured to automatically transmit serial data or reports.

Report Grabber Software Installation

Although the Report Grabber software creates a number of files when it is run, there is only one file needed for installation. To install the Report Grabber software, create a directory on the C: drive named C:\Report Grabber and copy the file named ReportGrabber.Exe to that directory

To run Report Grabber click Run on the Windows Start Menu and select C:\Report Grabber\ReportGrabber.Exe, double click C:\Report Grabber\ReportGrabber.Exe from within Windows Explorer, or create and use a shortcut on the Windows desktop.

Registration

Don't forget to register your software...

Report Grabber has not yet been registered for use on this computer. To register, complete the form below and click OK. A file named rptgrabber.rgs will be created in the Report Grabber directory. Attach the rptgrabber.rgs file to an e-mail and send to register@badgerware.net. An e-mail response containing your unlock code will be sent within 24 hours (usually much less!).

To unlock the software for full use, enter the unlock code when prompted after clicking Unlock on the Menu. Until then, only one minute of report data can be saved for one line.

Registration info

Name:	Joe Customer
Company:	Abc Corp.
Address:	123 Main St.
Address:	Dayton, OH 45419
Address:	
Address:	
E-mail:	joe@abccorp.com
Phone:	(937) 555-1212
Fax:	(937) 555-1213
Product:	Report Grabber Version 2.0
Serial No:	RG0001
Lock No:	5256 3656 4433 4251

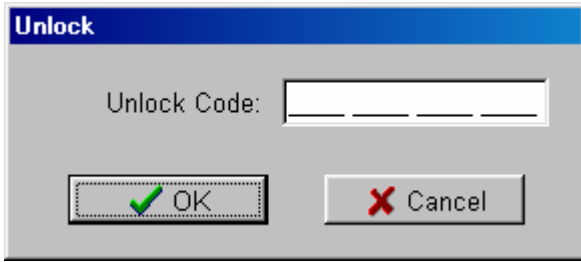
Report Grabber must be registered for use on each computer on which it is installed. Until registration is complete and the unlock code has been entered, the registration form will be displayed each time Report Grabber is run.

To register, complete the form and click OK. A file named rptgrabber.rgs will be created in the Report Grabber directory. Attach the rptgrabber.rgs file to an e-mail message and send to register@badgerware.net. An e-mail response containing the unlock code (for that particular computer) will be sent within 24 hours. The actual response time will usually be much less than 24 hours depending on what time of day (E.S.T.) the registration is received.

Click Cancel to postpone registration and close the form without creating the rptgrabber.rgs file.

To redisplay the form without having to restart the program, click Registration on the Report Grabber Menu.

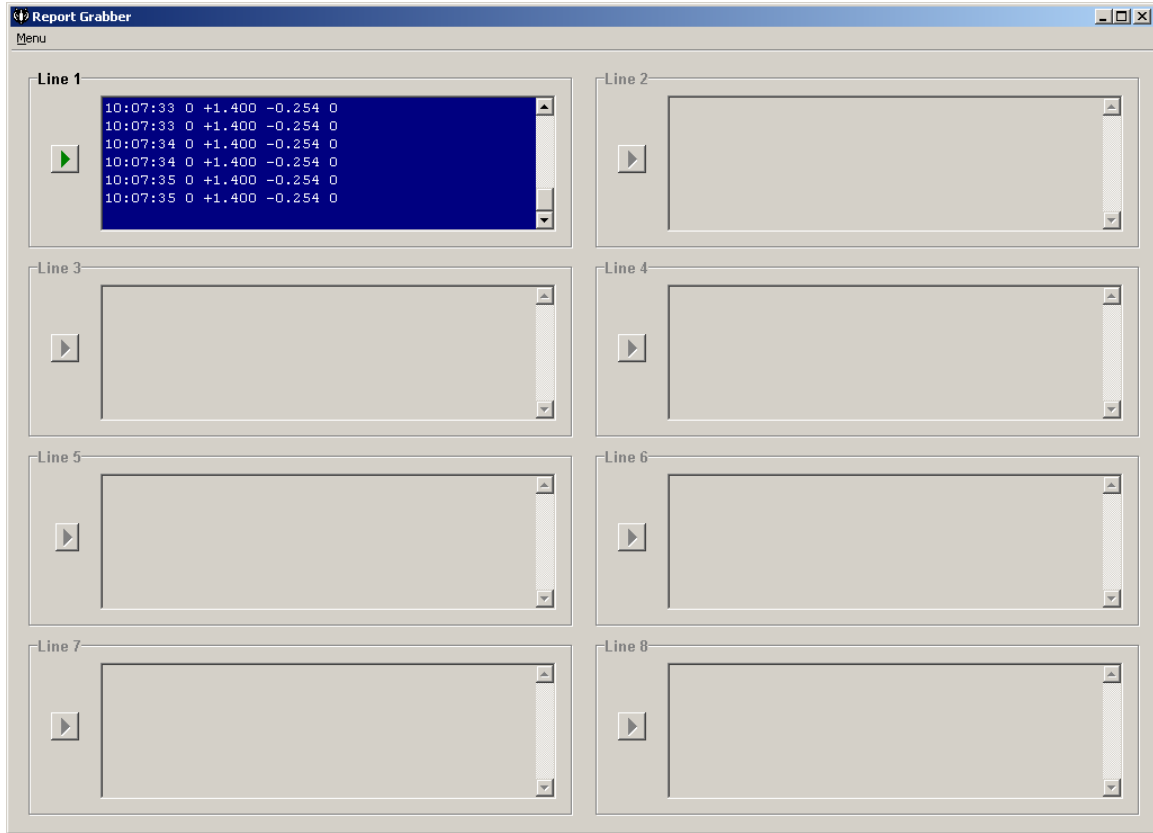
Note: Until registration and entry of the unlock code, only one minute of report data can be saved for one line.



To display the Unlock window, click Unlock on the Report Grabber Menu. To unlock the software, enter the unlock code received in the registration e-mail response and click OK.

Click cancel to close the window without attempting to unlock.

Section 2 Report Grabber Main Page



Menu

To access the Report Grabber Menu, click Menu in the upper left hand corner of the Main Page.

Stamping Click Stamping to configure date and time stamping of report data for each line.

COM Ports Click COM Ports to configure the PC COM Ports for communication with the external devices.

Exit Click Exit to exit from Report Grabber.

About Click About to display the Report Grabber version information.

Line Report Panels

Eight panels are provided to control and display the report data. **Note:** Panels are disabled (i.e. “grayed out”) when the associated COM Port is set to Off.

- Line Label** Each panel can have a unique label that identifies the line from which it is collecting reports. To display the Set Line Label window, double click on the label or within the panel (but outside the report window).
- Start** Click Start to enter a filename and start collecting reports from the associated line. Incoming report data will be displayed in the window and written to the specified file.
- Stop** Click Stop to stop collecting reports from the associated line.
- Report Window** Incoming report data is displayed in the report window. Double click within the window to expand to a larger window.

Section 3 Date & Time Stamping

The screenshot shows a dialog box titled "Configure Date & Time Stamping". It contains eight numbered panels, each with the following settings:

- Panel 1: Date Stamp, Time Stamp, Delimiter: comma
- Panel 2: Date Stamp, Time Stamp, Delimiter: comma
- Panel 3: Date Stamp, Time Stamp, Delimiter: comma
- Panel 4: Date Stamp, Time Stamp, Delimiter: comma
- Panel 5: Date Stamp, Time Stamp, Delimiter: comma
- Panel 6: Date Stamp, Time Stamp, Delimiter: comma
- Panel 7: Date Stamp, Time Stamp, Delimiter: comma
- Panel 8: Date Stamp, Time Stamp, Delimiter: comma

At the bottom of the dialog are two buttons: "OK" (with a green checkmark icon) and "Cancel" (with a red X icon).

The Configure Date & Time Stamping window is displayed when Stamping is clicked on the Menu.

Date & Time Stamping settings are saved to disk and retrieved each time Report Grabber is run.

Date & Time Stamping Configuration Panels

Eight panels are provided to configure date and time stamping of report data from up to eight external devices. Each panel is labeled per the associated Line Label on the Main Page.

Date Stamp	Specifies whether the current date will be added to the beginning of each line of incoming report data.
Time Stamp	Specifies whether the current time will be added to the beginning of each line of incoming report data.
Delimiter	Specifies the character that will be inserted between the date and time stamps and the incoming report data (comma, space, tab, or semicolon).
OK	Click OK to accept changes
Cancel	Click Cancel to discard changes.

Section 4 COM Port Settings

The screenshot shows a 'Configure COM Ports' dialog box with the following settings for each line:

Line	COM Port	Baud Rate	Data Bits	Parity	Stop Bits
Line 1	1	9600	8	none	1
Line 2	Off	9600	8	even	1
Line 3	Off	9600	8	even	1
Line 4	Off	9600	8	even	1
Line 5	Off	9600	8	none	1
Line 6	Off	9600	8	even	1
Line 7	Off	9600	8	even	1
Line 8	Off	9600	8	even	1

The Configure COM Ports window is displayed when COM Ports is clicked on the Menu.

COM Port settings are saved to disk and retrieved each time Report Grabber is run.

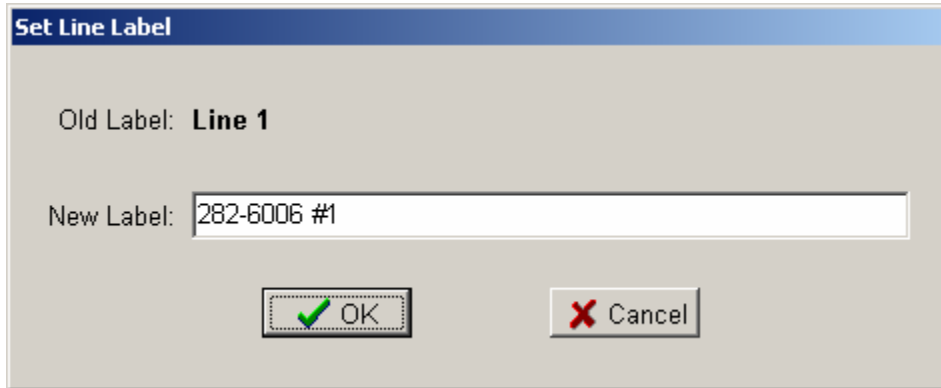
COM Port Configuration Panels

Eight panels are provided to configure serial communication with up to eight external devices. Each panel is labeled per the associated Line Label on the Main Page.

COM Port	Specifies the COM Port of the PC to which the external device is connected.
Baud Rate	Specifies the baud rate of the serial communication between the PC and the external device (1200, 2400, 4800, 9600, 19200, 38400, 57600, or 115200).
Parity	Specifies the parity for the serial communication between the PC and the external device (none, odd, or even).
Data Bits	Specifies the number of data bits for the serial communication between the PC and the external device (7 or 8).
Stop Bits	Specifies the number of stop bits for the serial communication between the PC and the external device (1 or 2).
OK	Click OK to accept changes
Cancel	Click Cancel to discard changes.

Section 5

Set Line Labels



The Set Line Label window is displayed when a Line Label or Line Report Panel is double clicked on the Main Page.

- | | |
|------------------|---|
| Old Label | The current label is displayed. |
| New Label | Enter the new label (up to 35 characters) in the New Label box. |
| OK | Click OK to accept the new label |
| Cancel | Click Cancel to keep the old label. |

Section 6

Report Files

Report files are text files that can be viewed and printed via a program such as Microsoft Notepad or imported into a program such as Microsoft Excel. The format of the files will be exactly as the data is transmitted from the external device with the possible addition of a date and/or time stamp at the beginning of each line of data.

Note: To save comma separated data to a file that can be launched directly into Excel, save the file with a *.csv extension.